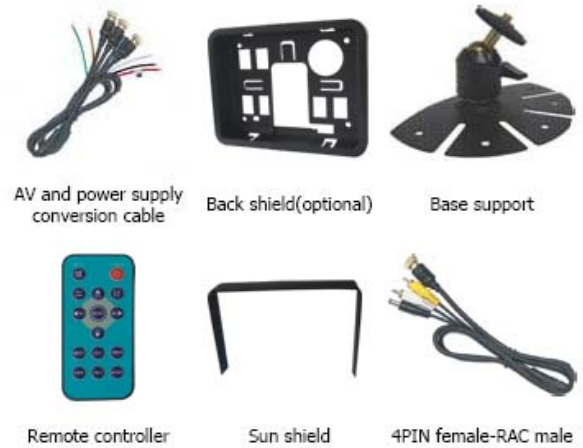


5 inch TFT LCD Monitor SHV-MO500112C



Display component: 5" TFT-LCD monitor

Audio output: 1W

Loudspeaker: one 4.0cm round loudspeaker

Connectors: automobile power supply adapter, AV and power cable, earphone

Power supply: automobile storage battery(12-32V), automobile adapter

Power consumption: about 8W

Outer dimensions: 147.6mm(W) x 109mm(H) x 26.5mm(T) without back shield;

165mm(W) x 126mm(H) x 29.2(T) with back shield

Dot pitch: 0.321(H) x 0.3185(V)

Resolution : 320 x 3 (RGB) x 234

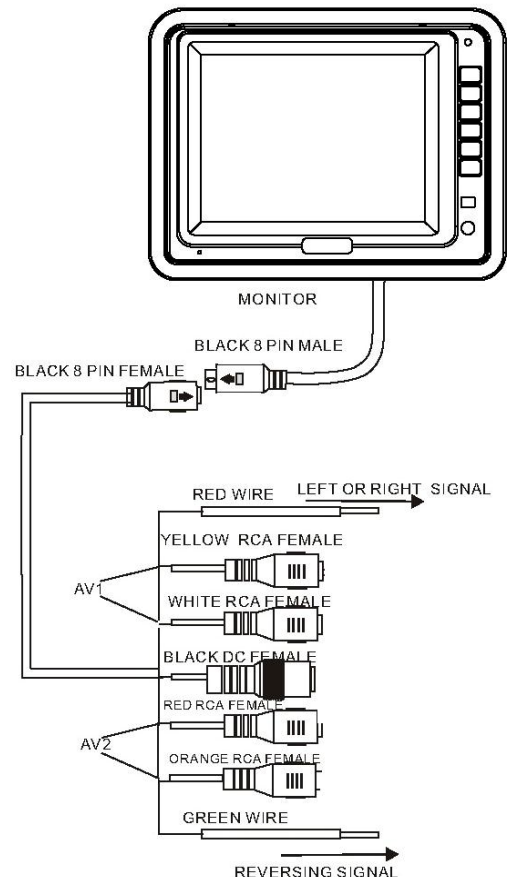
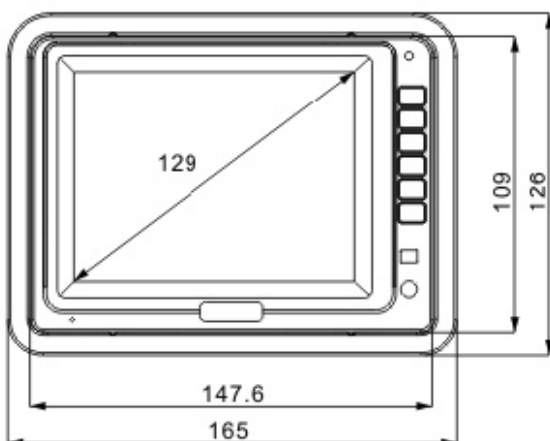
Contrast: 350:1

Brightness:400cd/m²

Viewing angle: U: 15 / D: 35, R/L: 50

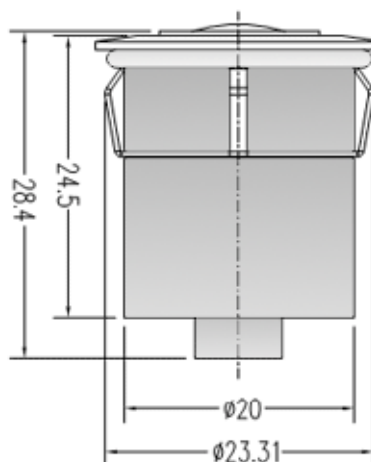
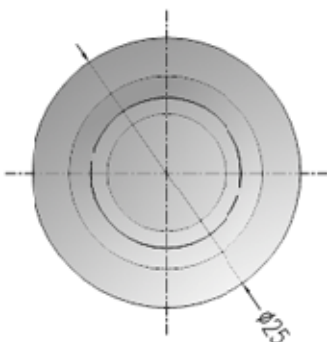
Operating temperature: -20~+70°C, RH90%

Storage temperature: -30~+80°C, RH90%



OV7225 Series Cameras

OmniVision OmniPixel2™ OV7225 cmos sensors are designed specifically for the automotive industry and can compete head-to-head with the competitive CCD market. The OV7225 image sensor is a high performance video camera with a small footprint and low power consumption. The OV7225 excels in low light conditions and can operate within a wide temperature range from -20C to +60C.



1/3" COLOR SENSOR

Image Device: V-MT9V011+VC0702D

TV System: NTSC

Effective Pixels: 640 x 480 pixels

Sensing Area: 3.58mm x 2.69mm

Sync. System: Internal

Resolution: 420TV lines

Supper low Illumination: 0.0Lux

Video Output: 1.0vp-p, 75Ohm

Gamma Correction: 0.45

AGC: Auto

S/N Ratio: Better than 48dB

White Balance: Auto

Electronic Shutter: 1/60Sec-15μSec (NTSC)

BLC: Auto

Current Consumption: Max. 120mA

Power Supply: DC12V

Operating Temperature: -20 C to +60 C,RH95%



SHV-CW141637C-180S - 180 degree non-mirrored
SHV-CW141637C-180M - 180 degree mirrored

SHV-CBL5M4P - 5 meter cable
SHV-CBL7-5M4P - 7.5 meter cable
SHV-CBL10M4P - 10 meter cable
SHV-CBL20M4P - 20 meter cable
SHV-CBL-COIL - Coiled cable
SHV-CBLAV4P - A/V Breakout Cable

