

SHV-TRIVIEW-S System

7 inch monitor, Cables, Mounts,
Rear Color IR Camera, Shutter, Heater
Dual Side Cameras, Signal Activated

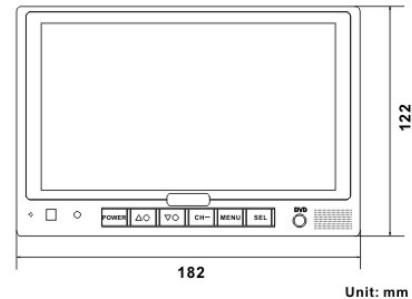


SHV-TRIVIEW-S System

7 inch monitor, Cables, Mounts, Rear Color IR Camera, Shutter, Heater Dual Side Cameras, Signal Activated



Back



Display component: 7" TFT-LCD monitor
Resolution: 1440WX234H
Brightness: 350cd/m²
Contrast : 400:1
Input Voltage: 12V~32V
Humidity: 20%~80%
Ratio: 16:9
Dot pitch: 0.321(H) x 0.370(V)
Viewing angle: U:45 / D:65 , R/L : 65
Operating Temperature: -10C to +65C
Storage Temperature: -30C to +80C

Video input:

Four cameras video input, Peak: 1Vp-p, Impedance: 75Ω
One DVD VIN video input, Peak: 1Vp-p, Impedance: 4.7KΩ

Audio input:

Four cameras audio input, Peak: 1Vp-p, Impedance: 4.7KΩ
One DVD VIN audio input , Peak: 1Vp-p, Impedance: 4.7KΩ

Video output:

One REC VOUT output, Peak: 1Vp-p, Impedance: 75Ω
One LIVE VOUT output, Peak: 1Vp-p, Impedance: 75Ω

Audio output:

One REC audio output, Peak: 1Vp-p, Impedance: 4.7KΩ



SHV-TRIVIEW-S System

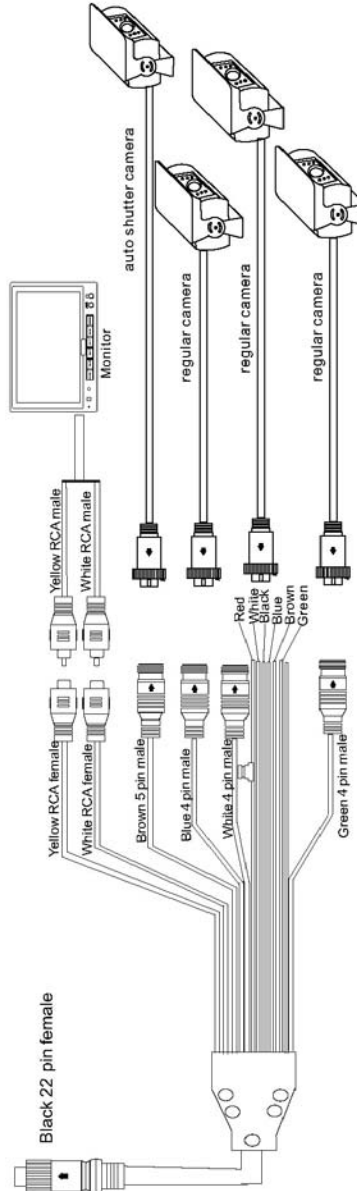
7 inch monitor, Cables, Mounts,
Rear Color IR Camera, Shutter, Heater
Dual Side Cameras, Signal Activated



MO-127

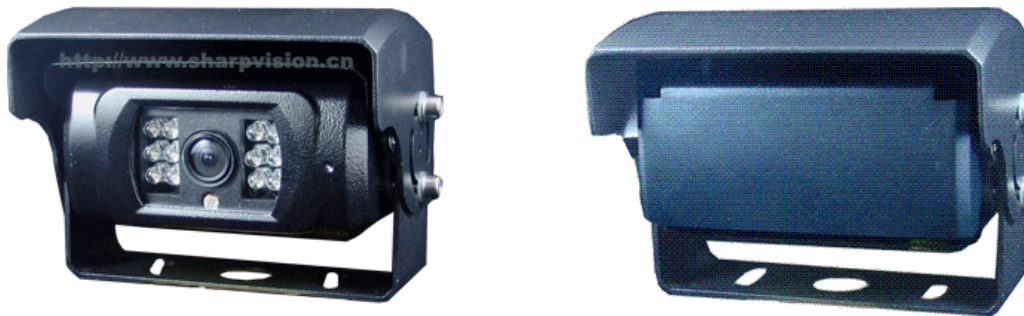
Black 22 pin male

- Black 4 pin male to regular camera.
- Black 5 pin male to auto shutter camera.
- Single red wire to positive power supply of DC / 12-32V.
- Single black wire to GND.
- Single brown wire to positive power wire of back-u
- Single white wire to positive power wire of left turn light .
- Single blue wire to positive power wire of right turn light .
- Single green wire for the trigger control.
- Yellow RCA female for video output .
- White RCA female for audio output .



SHV-TRIVIEW-S System

7 inch monitor, Cables, Mounts,
Rear Color IR Camera, Shutter, Heater
Dual Side Cameras, Signal Activated



Shutter Camera Specifications:

View Angle: 100° Horizontal (120 diagonal)

Image Sensor: OV7949 1/3" Color

Resolution: 420 Lines

Shutter: 1/60s~12uSec

Temperature Range: -20° C to 70° C

Illumination: 0.1 Lux F:2.0

Power (LED on): 12 VDC, 450 mA

Built-in Microphone

Water-tight Cables 20 meter (66 ft)

12 "IR" Infrared lamps

OmniVision OmniPixel2™ OV7949 sensors are designed specifically for the automotive industry and can compete head-to-head with the competitive CCD market. The OV7949 image sensor is a high performance video camera with a small footprint and low power consumption. The OV7949 excels in low light conditions and can

SHV-TRIVIEW-S System

**7 inch monitor, Cables, Mounts,
Rear Color IR Camera, Shutter, Heater
Dual Side Cameras, Signal Activated**



Side Camera Specifications:

View Angle: 75° Horizontal

Image Sensor: OV7949 1/3" Color

Resolution: 420 Lines

Temperature Range: -20° C to 70° C

Illumination: 0.1 Lux F:2.0

Power (LED on): 12 VDC, 450 mA

Built-in Microphone

Water-tight Cables 7 meter (22 ft)

"IR" Infrared lamps

OmniVision OmniPixel2™ OV7949 sensors are designed specifically for the automotive industry and can compete head-to-head with the competitive CCD market. The OV7949 image sensor is a high performance video camera with a small footprint and low power consumption. The OV7949 excels in low light conditions and can